

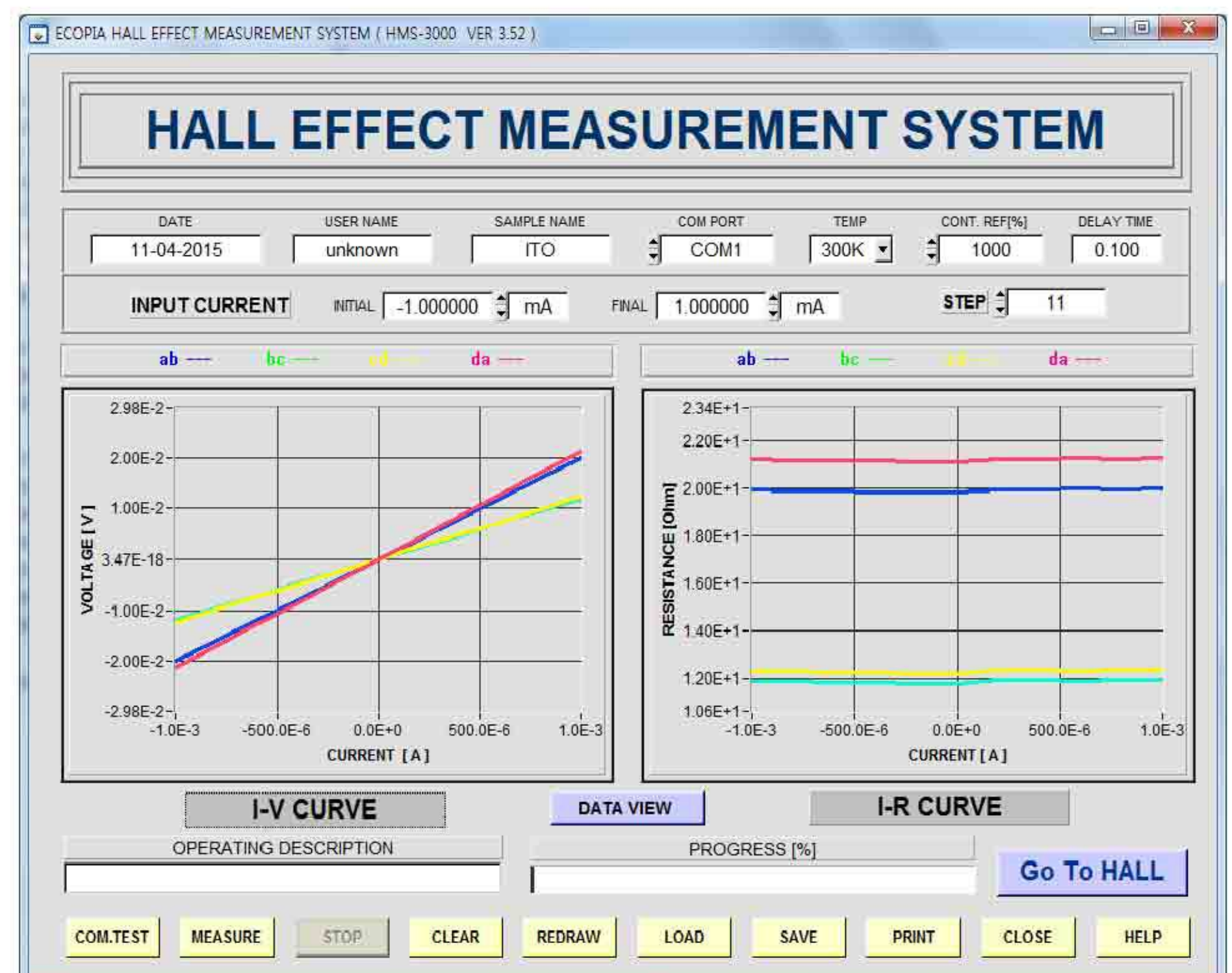
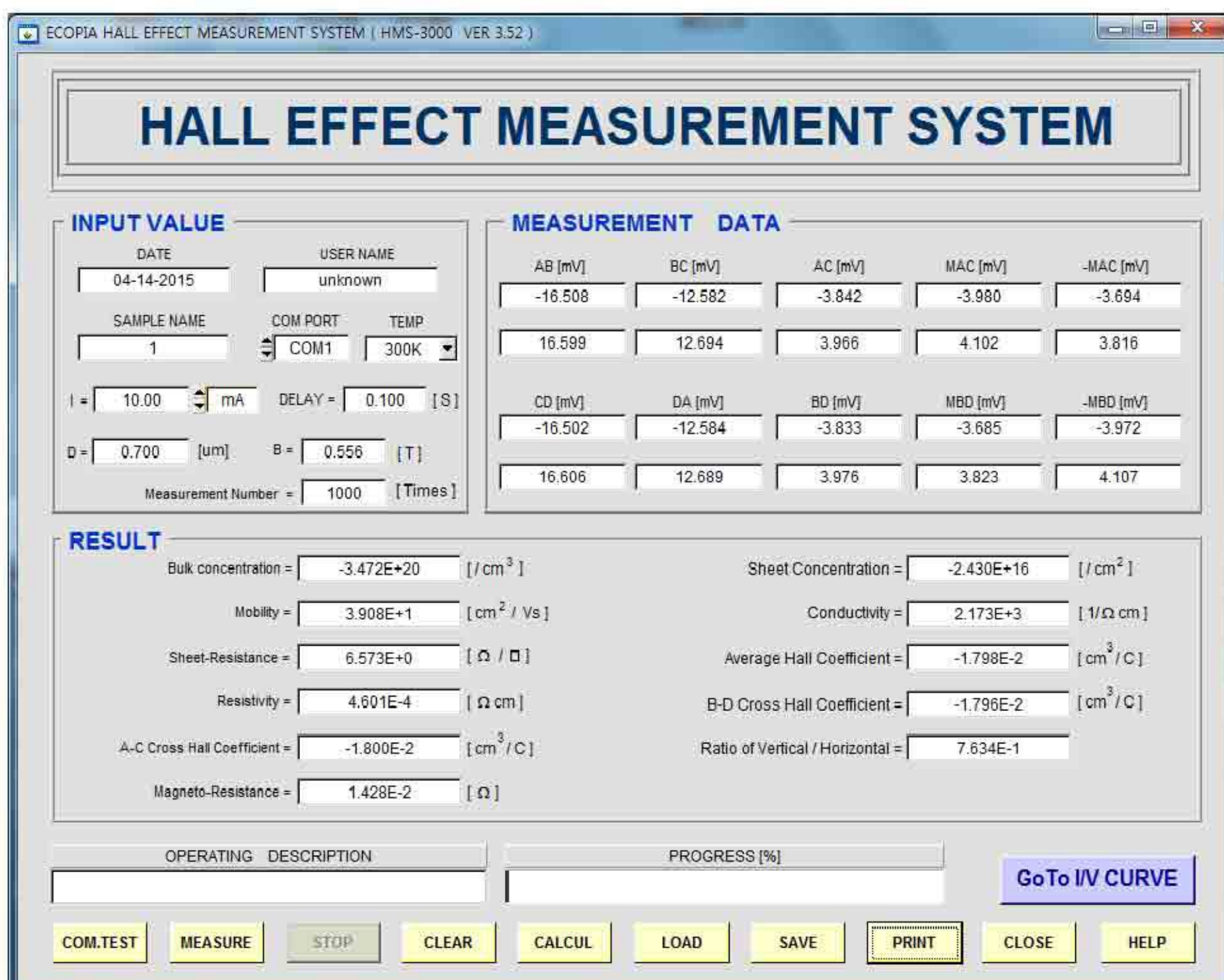
# Hall Effect Measurement system

Model no. HMS-3000 + MS55T magnet.



NO	HMS-3000 Main body	Description
1	Size	32 x 30 x 10.5cm( W x D x H )
2	Weight	7.7kg
3	Carrier density	10e7~10e21(cm-3)
4	Resistivity	10e-4 ~ 10e7 (ohm.cm)
5	Mobility	1~10e7 (cm2/Vs)
6	Input current range	1nA ~ 20mA ( DC type )
7	Output voltage	12V
8	Software	Win XP, Vista, Win7 , Win8, Win10
9	Others in s/w	IV, IR graph plot. Hall coefficient, MR.

## Software





## Magnet kits compatible with HMS-3000

Main body	MS magnet	MP magnet	EVM magnet	High temp
HMS-3000	MS31T	MP31T	EVM-100R	HT55T3 (300°C)
	MS37T	MP37T	EVM-100N2	HT55T5 (500°C)
	MS55T	MP55T		
	MS100T	MP100T		
Remark			Variable magnet field (0.27~0.97Tesla)	Variable Temperature (RT ~ 773K)

### Model no. MS55T



- \* Compact desk top design.
- 0.55 Tesla permanent magnet.
- Measurable temp: RT, 77K

### Model no. MS100T



- \* 1.0 Tesla permanent magnet.
- Measurable temp: Room Temperature only.

### Model no. MP55T



- \* Easy slide magnet moves on the rail.
- \* Round magnets positioned on both ends , apply N to S and S to N polarity.
- 0.55 Tesla permanent magnet.
- Measurable temp : RT, 77K

### Model no. EVM-100R/ EVM-100N2



- Variable magnet kit
- Magnet field : 0.25 ~ 0.97 Tesla
- Measurable temp : RT, 77K.
- Compatible with HMS-3000



- LN2 tank with sample board holding kit

